

MULTIFLO™ PACK

Compact Lamella Settler

Veolia's MULTIFLO™ technology is an universal and multi-purpose clarification process that can be adapted under different forms to meet the various needs of our municipal and industrial clients. In the municipal market, MULTIFLO™ classic is recommended for surface water and seawater treatment, and for primary, secondary and tertiary wastewater treatment.

Flow rates:
from 25 up to 400 m³/h per unit



Features & Benefits

- High level of homogenization low retention time
- Removal of by-pass and dead zones to achieve classical flocculation efficiencies in a smaller tank
- Complete mixing of the influent water with the chemicals and the recirculated sludge
- Increased pumping efficiency for a given power consumption
- Reduced polymer consumption
- Easy control and maintenance for the reagent injection system
- Fully automated operation
- Rapid installation and commissioning

Applications

- Surface water clarification
- Polishing for drinking water
- Carbonate removing and water softening
- Seawater clarification
- Urban wastewater purification
- Storm water treatment
- Primary, secondary and tertiary wastewater treatment
- Biofilter backwash treatment
- Wastewater reuse

Related Services

- Support for setting up and commissioning
- Local after-sales service for preventative and corrective maintenance program
- Tailor-made design according to project

Hydrex™ chemicals

Associated conditioning Hydrex™ solutions for optimum operation: Hydrex 3000 and 6000 series (coagulants and flocculants).

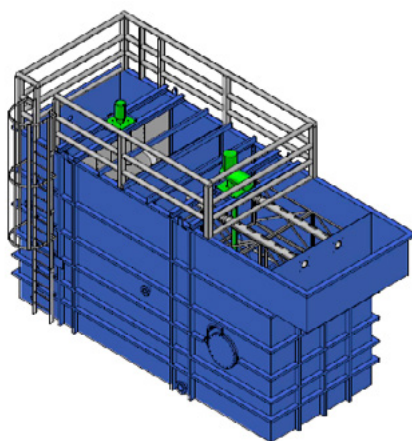
MULTIFLO™ PACK

System Dimensions & Performances

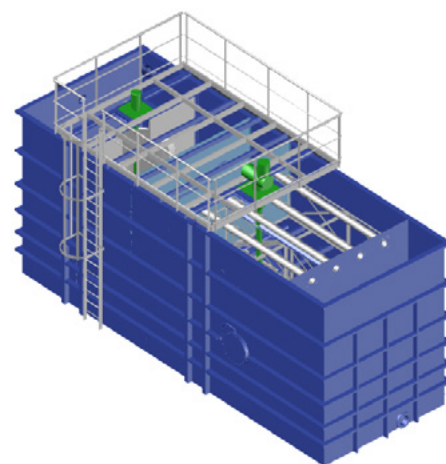
Clarification skid	Nominal Flow (m³/h)	Skid Width (m)	Water Depth (m)	Flocculation Zone Length (m)	Number of settlers per skid	Settler Length (m)	Storage Tank Length (m) (Optional)	Total Length (m)
C15351D	25	1.5	3.5	1.2	1	1.8	3	3.1
C20351D	50	2	3.5	1.8	1	2.4	4	4.5
C25351D	100	2.5	3.5	2.5	1	3.4	5	6.3
C30351D	150	3	3.5	3	1	4	6	7.5
C35351D	200	3.5	3.5	3.5	1	4.5	7	8.6
C30352D	300	3	3.5	4.5	2	4	0	13.4
C35352D	400	3.5	3.5	5.3	2	4.5	0	15.4



MULTIFLO Unit C3035



MULTIFLO pack Standard



MULTIFLO pack with storage tank

For higher flow rates or other processes, consult your local Veolia Water Technologies company, details below.

Visit our website: www.veoliawatertechnologies.com/multiflo/en/

In keeping with the progressive nature of the company, we reserve the right to amend details without notice.
Veolia/Multiflo™ Pack/AQF068_EN_V1.1/Oct2014